

APPLICANT

RICHLAND FARMS, INC.

Richland Plantation Field

EAST FELICIANA PARISH, LOUISIANA

Docket No. 18-587

Proposed Unit

Tuscaloosa Marine Shale Zone, Reservoir A

November 15, 2018

Witness: Bryan S. Groves

prepared by

BRYAN GROVES

OIL & GAS GEOLOGIST

UNITIZATION / 3-D INTERPRETATION

www.bryangrovesgeology.com

RESCALED 2" LOG TO 1" LOG
 OXY USA, INC.
 L TUSC RA SUA; Richland Plantation A #1
 Sec. 69, T1S, R2E
 Serial No. 215970

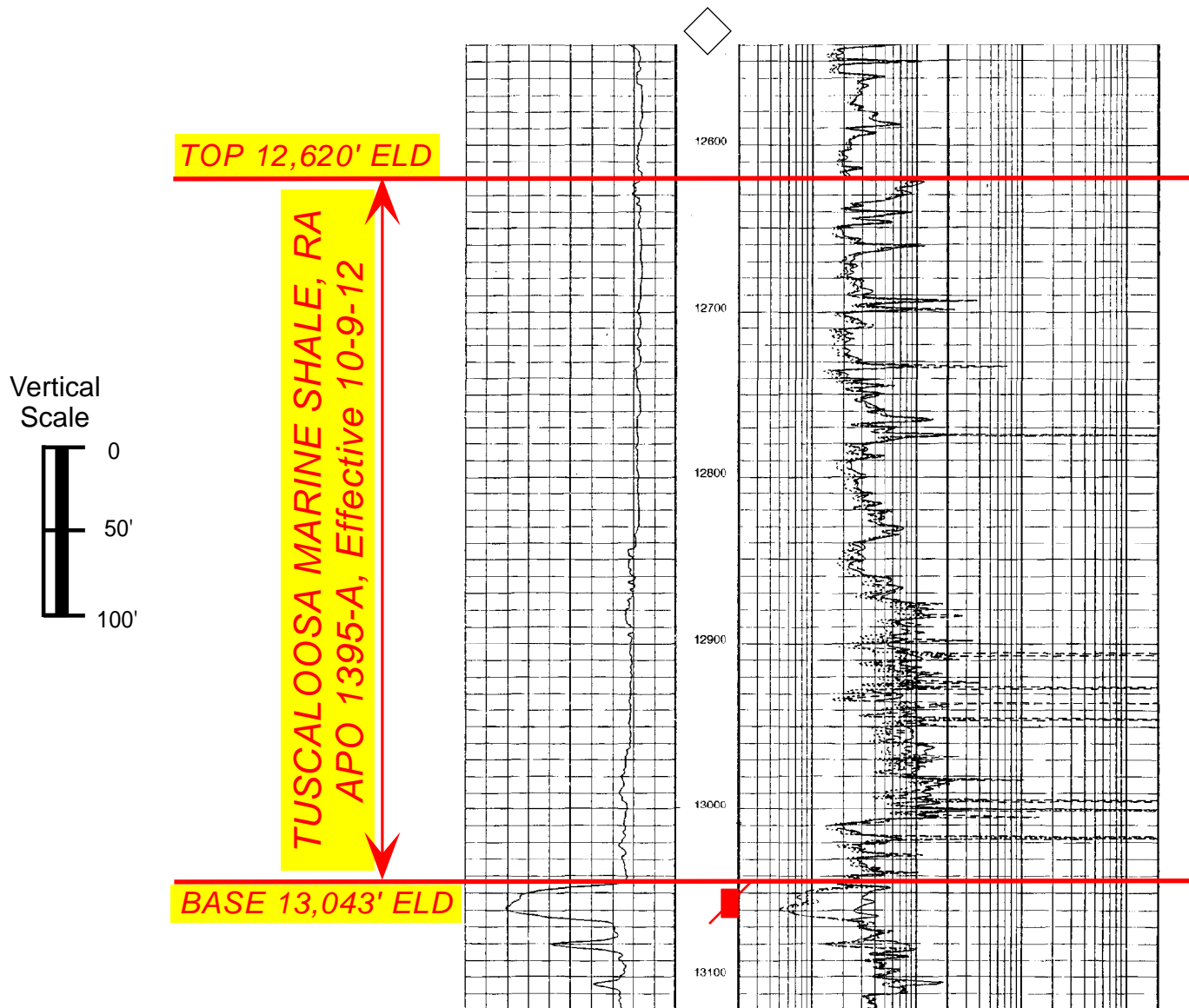


EXHIBIT NO. 1
 DOCKET NO. 18-587 DATE: 11-15-18

RICHLAND FARMS, INC.

RICHLAND PLANTATION FIELD
 EAST FELICIANA PARISH, LOUISIANA

DEFINITION LOG

***Tuscaloosa Marine Shale,
Reservoir A***

BRYAN GROVES
 OIL & GAS GEOLOGIST
 www.bryangrovesgeology.com

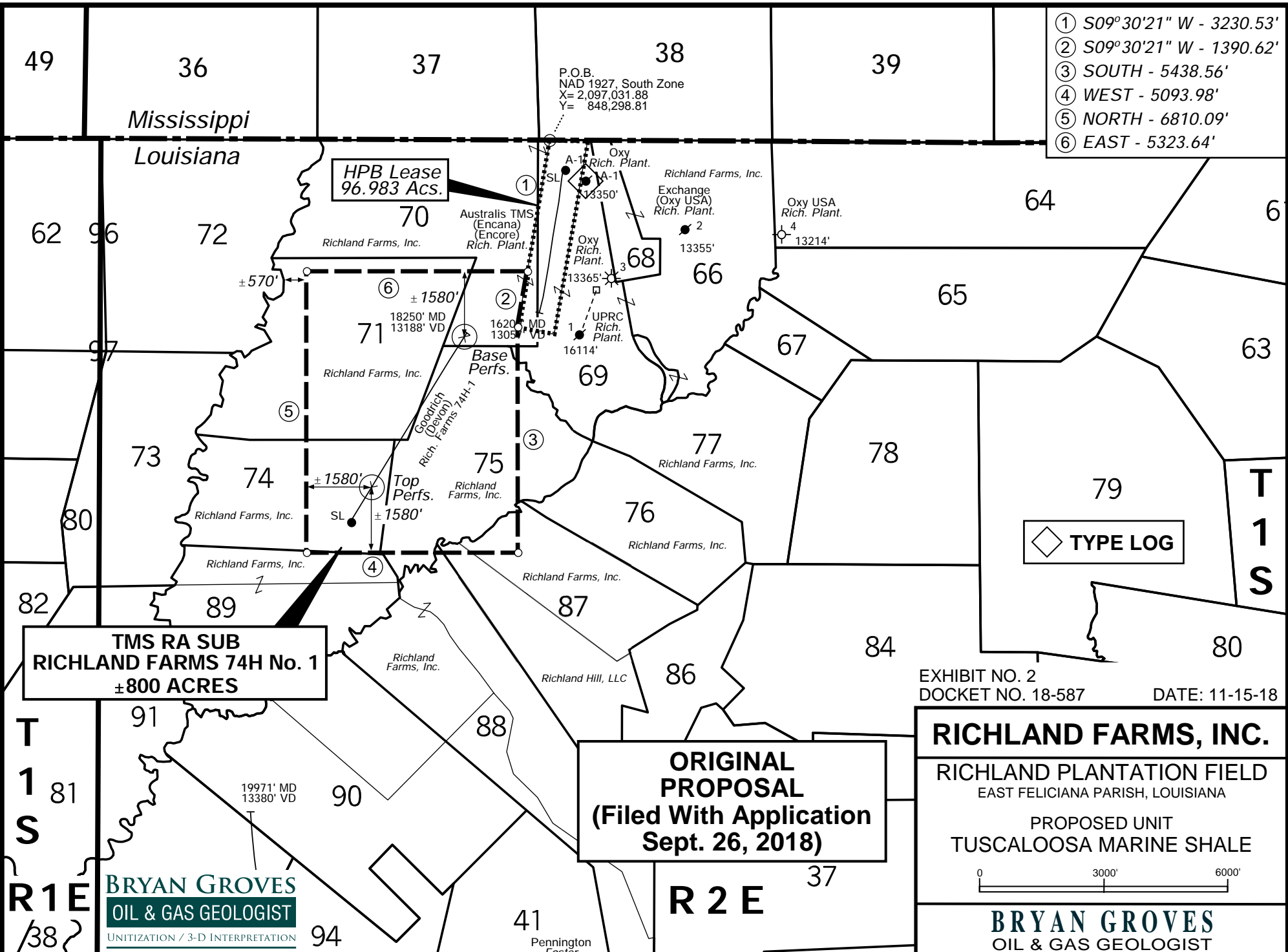
Comp. 10-6-93
 Perfs. 13048-64' (L TUSC)
 I.P. 375 MCFD + 240 BOPD + 18 BWPD
 FTP 1750# on 10/64" Ck.
 GOR 1560:1, Gty. 39.5°

Recomp. 10-6-94
 Perfs. 13048-64' (L TUSC)
 I.P. 430 MCFD + 130 BOPD + 25 BWPD
 FTP 587# on 10/64" Ck.
 GOR 3307:1, Gty. 43°

P & A 2-9-96

BRYAN GROVES
 OIL & GAS GEOLOGIST
 UNITIZATION / 3-D INTERPRETATION
 www.bryangrovesgeology.com

- ① S09°30'21" W - 3230.53'
- ② S09°30'21" W - 1390.62'
- ③ SOUTH - 5438.56'
- ④ WEST - 5093.98'
- ⑤ NORTH - 6810.09'
- ⑥ EAST - 5323.64'



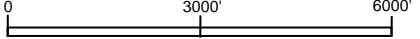
HPB Lease
96.983 Ac.

TMS RA SUB
RICHLAND FARMS 74H No. 1
±800 ACRES

ORIGINAL PROPOSAL
(Filed With Application
Sept. 26, 2018)

EXHIBIT NO. 2
DOCKET NO. 18-587
DATE: 11-15-18

RICHLAND FARMS, INC.
RICHLAND PLANTATION FIELD
EAST FELICIANA PARISH, LOUISIANA
PROPOSED UNIT
TUSCALOOSA MARINE SHALE



BRYAN GROVES
OIL & GAS GEOLOGIST
UNITIZATION / 3-D INTERPRETATION
www.bryangrovesgeology.com

BRYAN GROVES
OIL & GAS GEOLOGIST
www.bryangrovesgeology.com

- ① S09°30'21" W - 3230.53'
- ② S09°30'21" W - 1390.62'
- ③ SOUTH - 5438.56'
- ④ WEST - 5093.98'
- ⑤ NORTH - 6810.09'
- ⑥ EAST - 5323.64'

P.O.B.
NAD 1927, South Zone
X= 2,097,031.88
Y= 848,298.81

HPB Lease
96.983 Ac.

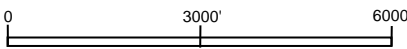
TMS RA SUB
RICHLAND FARMS 74H No. 1
±800 ACRES

TMS RA SUA
±1074 ACRES
APO 1395-A
DKT. 12-581
Term. by 29-L-3
Eff. 6-22-18

ORIGINAL PROPOSAL
(Filed With Application
Sept. 26, 2018)

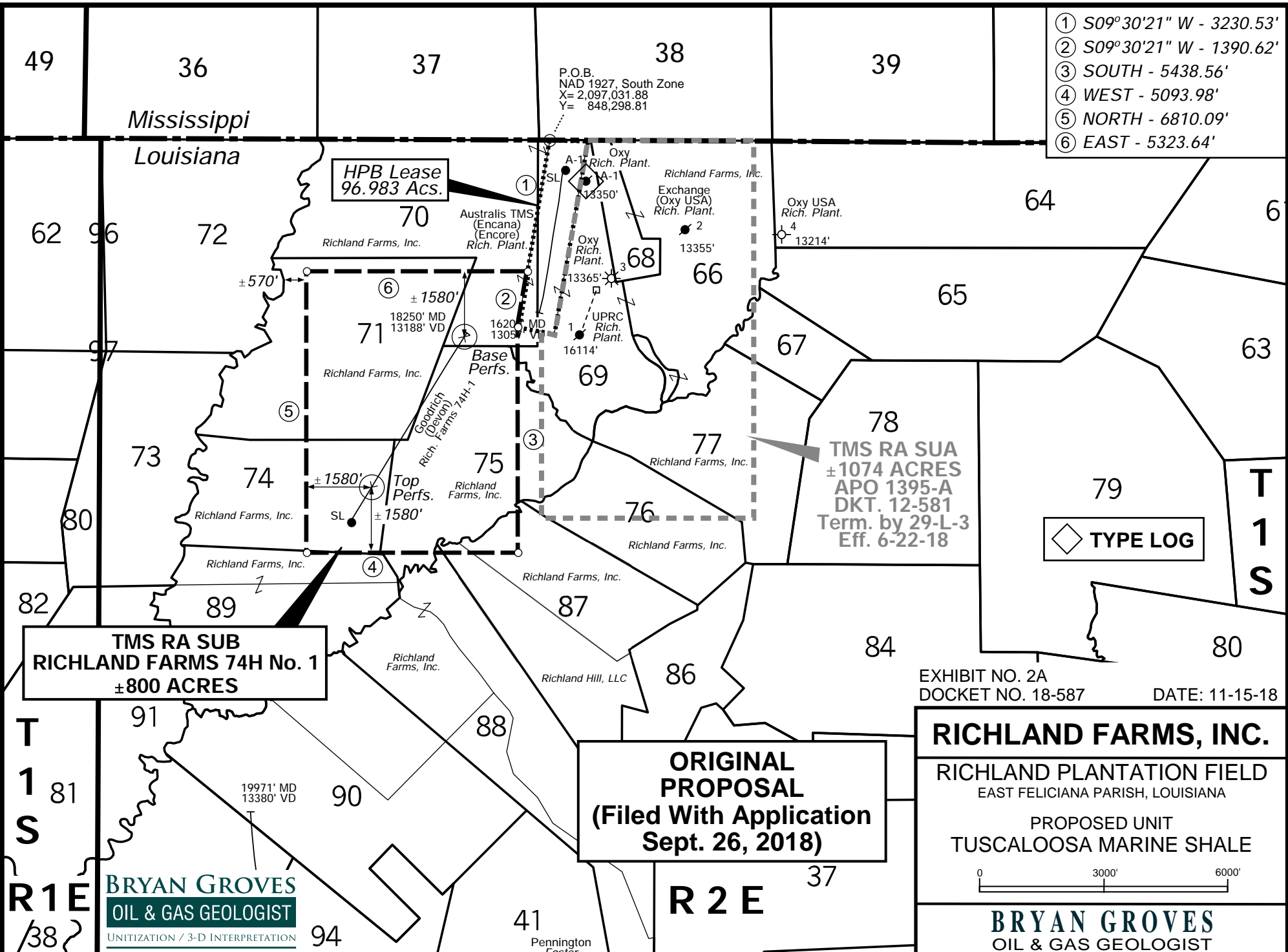
EXHIBIT NO. 2A
DOCKET NO. 18-587
DATE: 11-15-18

RICHLAND FARMS, INC.
RICHLAND PLANTATION FIELD
EAST FELICIANA PARISH, LOUISIANA
PROPOSED UNIT
TUSCALOOSA MARINE SHALE



BRYAN GROVES
OIL & GAS GEOLOGIST
www.bryangrovesgeology.com

◇ TYPE LOG

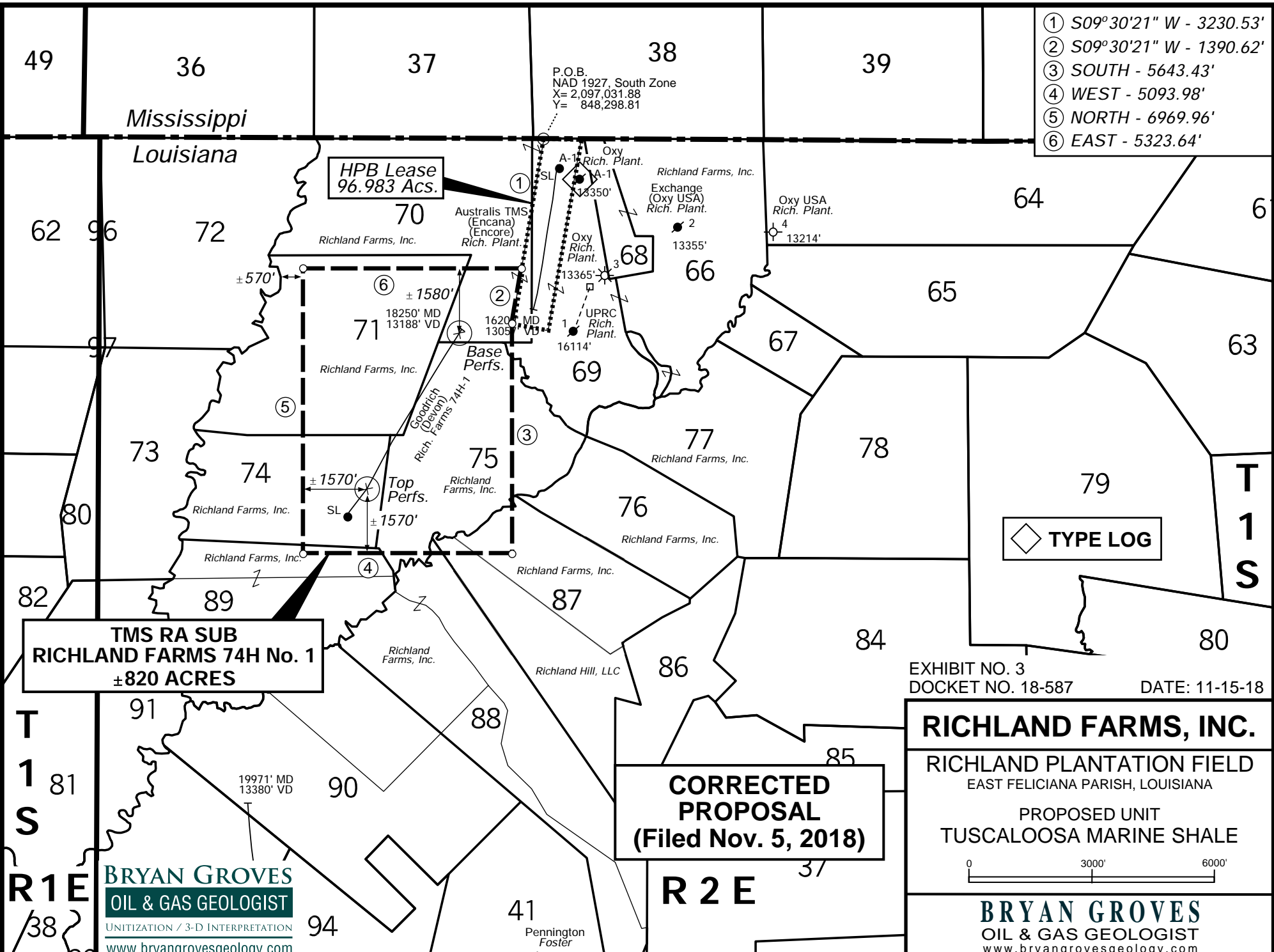


T
1
S
R1E
38

T
1
S

BRYAN GROVES
OIL & GAS GEOLOGIST
UNITIZATION / 3-D INTERPRETATION
www.bryangrovesgeology.com

- ① S09°30'21" W - 3230.53'
- ② S09°30'21" W - 1390.62'
- ③ SOUTH - 5643.43'
- ④ WEST - 5093.98'
- ⑤ NORTH - 6969.96'
- ⑥ EAST - 5323.64'



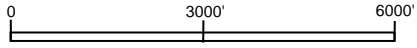
HPB Lease
96.983 Ac.

TMS RA SUB
RICHLAND FARMS 74H No. 1
±820 ACRES

CORRECTED PROPOSAL
(Filed Nov. 5, 2018)

EXHIBIT NO. 3
DOCKET NO. 18-587
DATE: 11-15-18

RICHLAND FARMS, INC.
RICHLAND PLANTATION FIELD
EAST FELICIANA PARISH, LOUISIANA
PROPOSED UNIT
TUSCALOOSA MARINE SHALE



BRYAN GROVES
OIL & GAS GEOLOGIST
www.bryangrovesgeology.com

BRYAN GROVES
OIL & GAS GEOLOGIST
UNITIZATION / 3-D INTERPRETATION
www.bryangrovesgeology.com

T 1 S
R 1 E

T 1 S

R 2 E

◇ TYPE LOG

P.O.B.
NAD 1927, South Zone
X= 2,097,031.88
Y= 848,298.81

Mississippi

Louisiana

49

36

37

38

39

62

96

72

70

①

68

66

64

±570'

⑥

±1580'

②

71

18250' MD
13188' VD

③

1620' MD
1309' VD

69

77

65

67

63

⑤

73

74

75

③

77

78

79

80

±1570'

SL

Top Perfs.

Richland Farms, Inc.

76

Richland Farms, Inc.

T 1 S

82

89

87

86

84

80

91

88

85

19971' MD
13380' VD

90

T 1 S

81

R 1 E

38

94

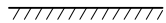
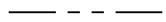
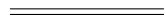



41

Pennington
Foster

37

R 2 E

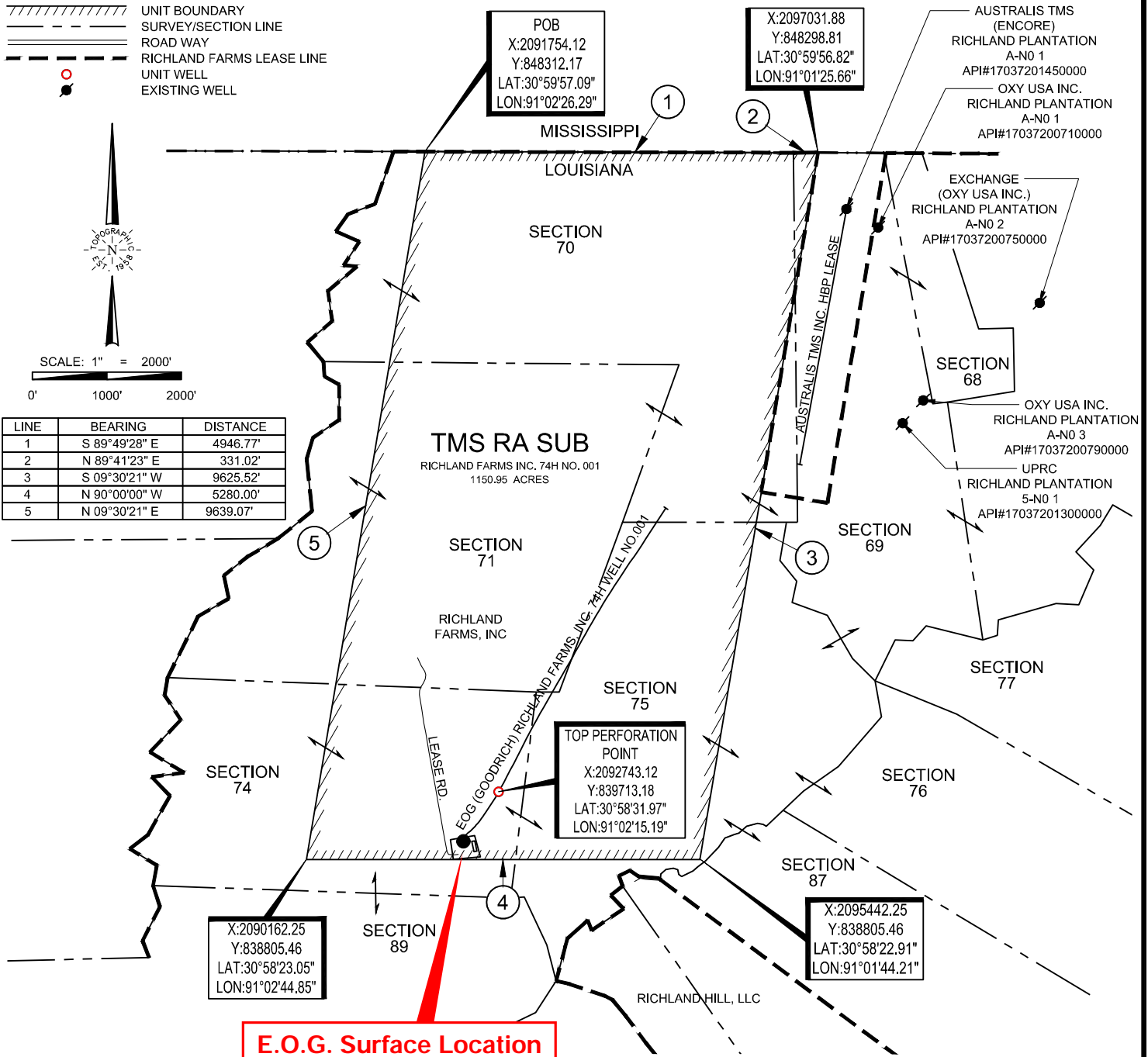
LEGEND

-  UNIT BOUNDARY
-  SURVEY/SECTION LINE
-  ROAD WAY
-  RICHLAND FARMS LEASE LINE
-  UNIT WELL
-  EXISTING WELL



SCALE: 1" = 2000'
0' 1000' 2000'

LINE	BEARING	DISTANCE
1	S 89°49'28" E	4946.77'
2	N 89°41'23" E	331.02'
3	S 09°30'21" W	9625.52'
4	N 90°00'00" W	5280.00'
5	N 09°30'21" E	9639.07'




E.O.G. Surface Location Pad And Facilities

Filed Oct. 26, 2018

RICHLAND FARMS, INC.
EXHIBIT NO. 4
DOCKET NO. 18-587
DATE: 11-15-18
WITNESS: Bryan Groves

EXHIBIT No. _____ DOCKET No. 18-



RICHLAND PLANTATION FIELD
EAST FELICIANA PARISH, LOUISIANA

Proposed Unit Plat
Tuscaloosa Marine Shale

0' 1000' 2000' 4000'

Date: _____ richlandpln.dgn

Geology: LOUIS GILBERT & ASSOCIATES, INC.

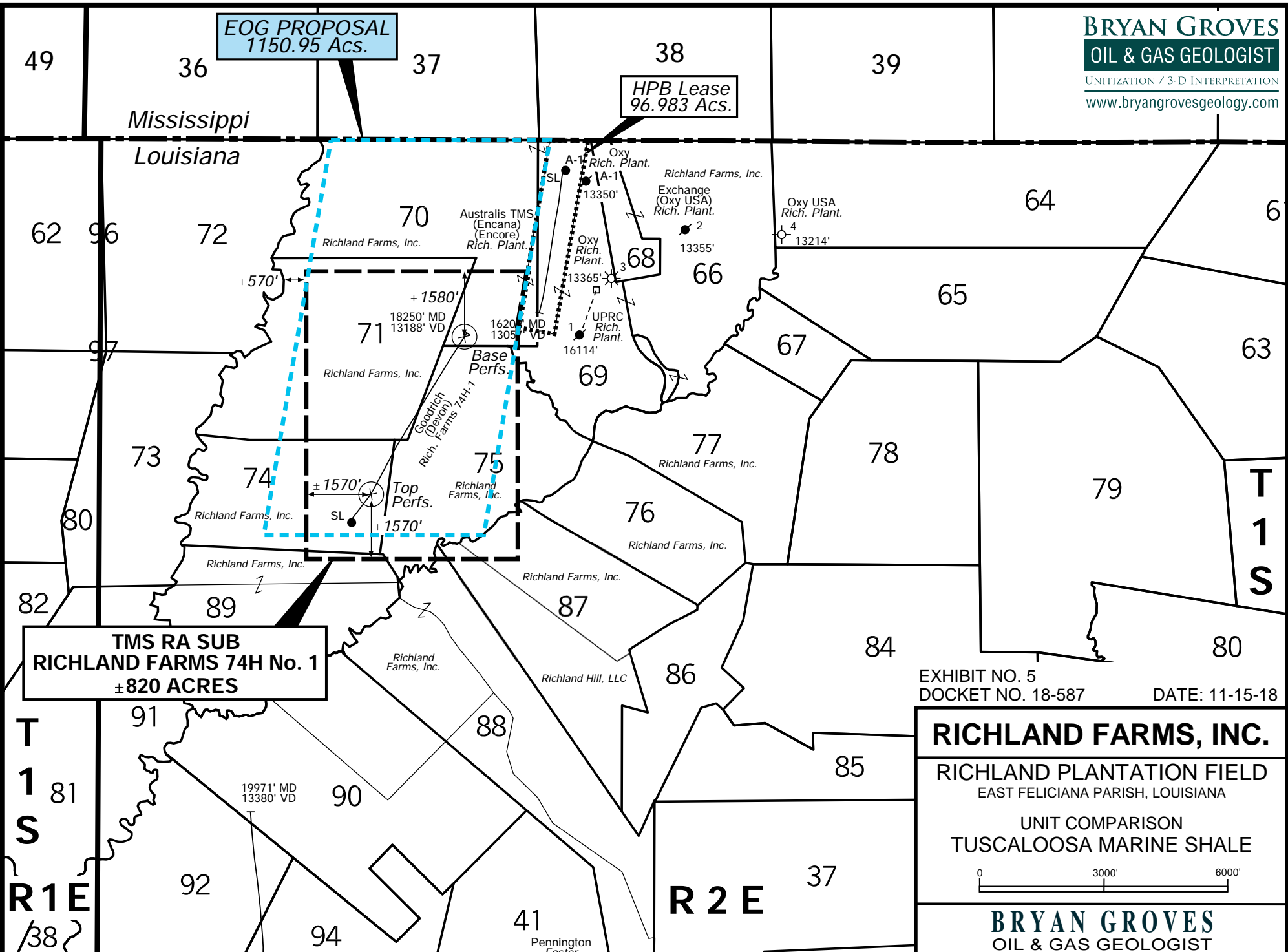
EOG PROPOSAL
 1150.95 Ac.

HPB Lease
 96.983 Ac.

TMS RA SUB
RICHLAND FARMS 74H No. 1
 ±820 ACRES

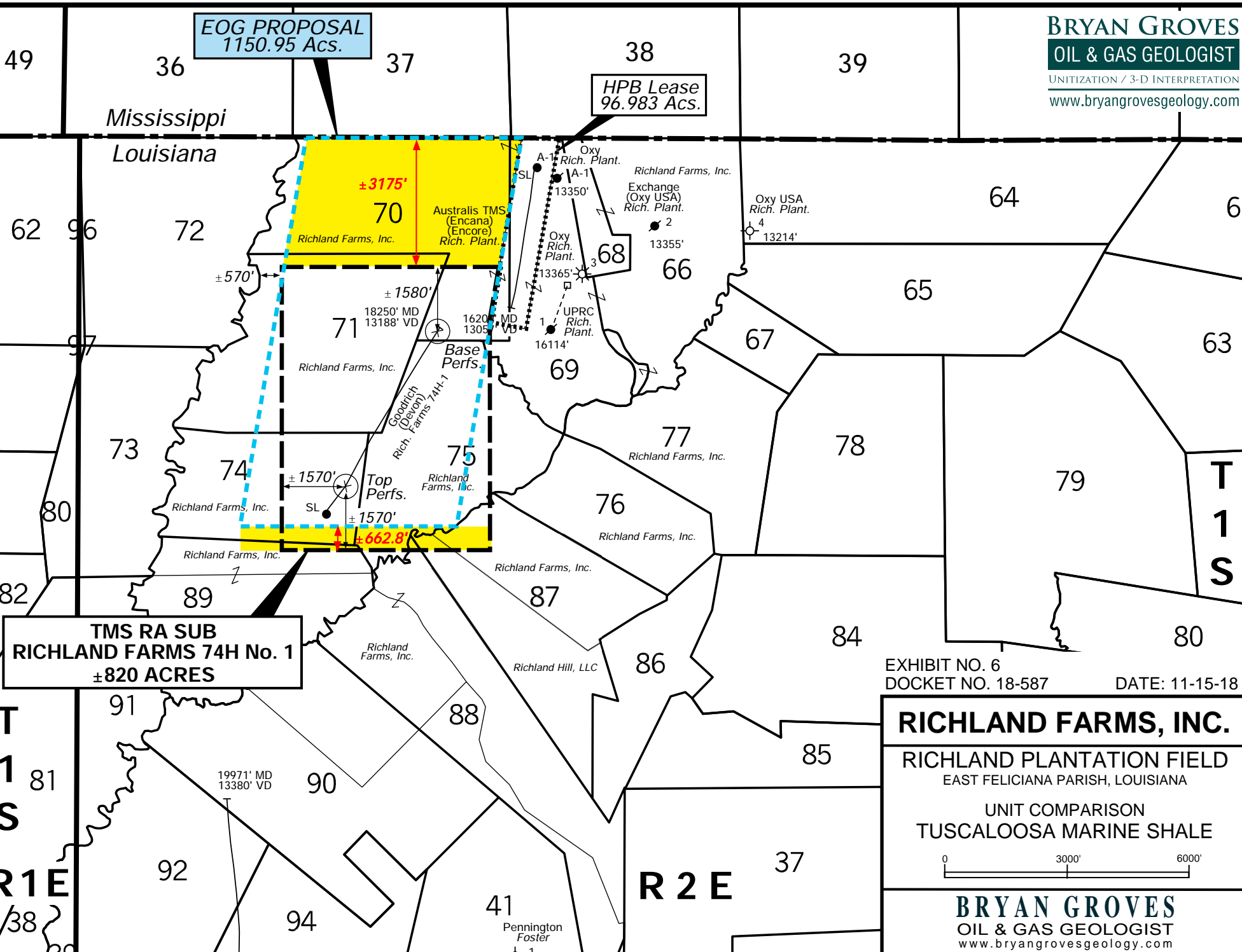
EXHIBIT NO. 5
 DOCKET NO. 18-587
 DATE: 11-15-18

RICHLAND FARMS, INC.
 RICHLAND PLANTATION FIELD
 EAST FELICIANA PARISH, LOUISIANA
 UNIT COMPARISON
 TUSCALOOSA MARINE SHALE



EOG PROPOSAL
 1150.95 Ac.

HPB Lease
 96.983 Ac.



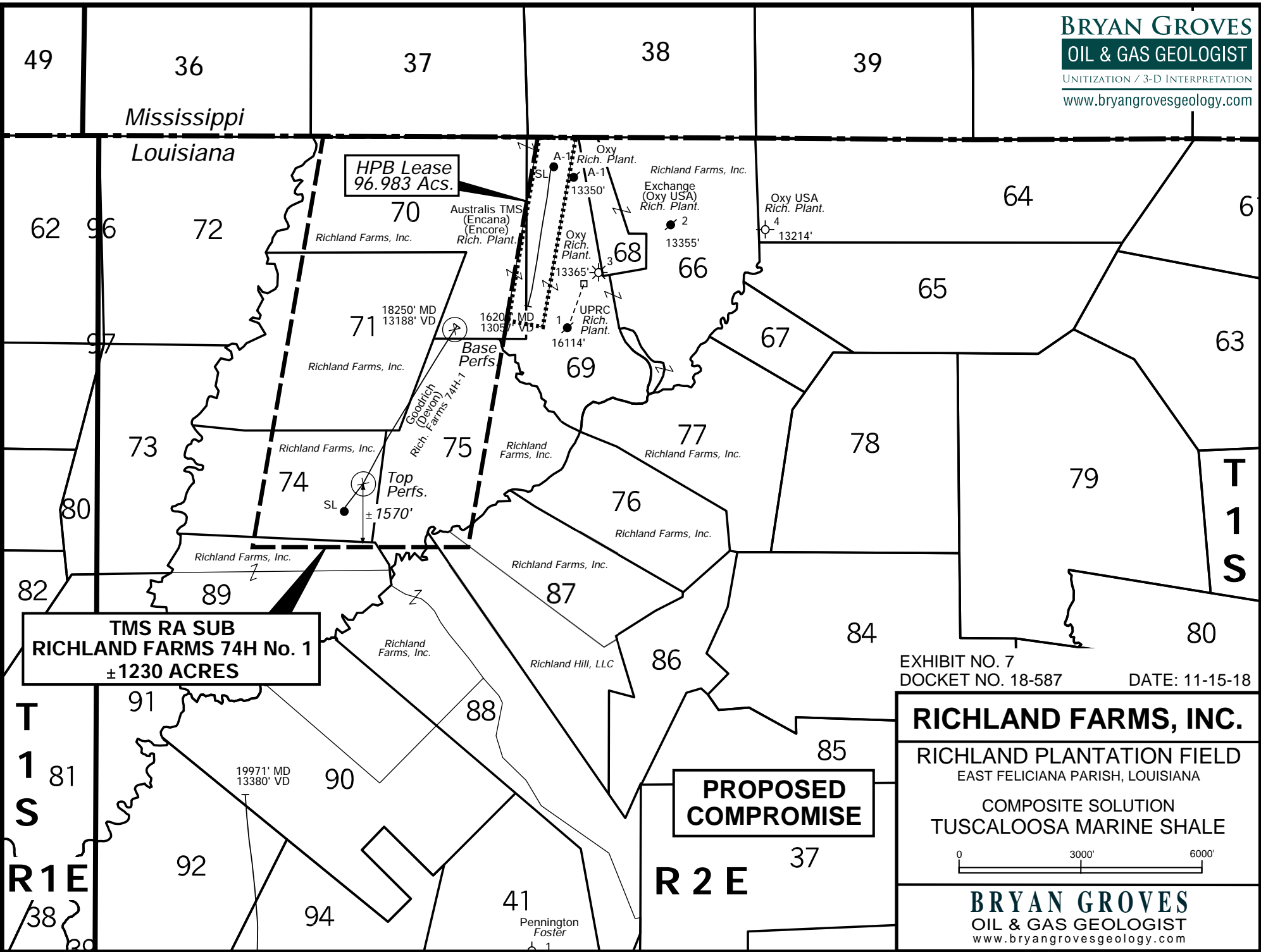
TMS RA SUB
RICHLAND FARMS 74H No. 1
 ±820 ACRES

EXHIBIT NO. 6
 DOCKET NO. 18-587
 DATE: 11-15-18

RICHLAND FARMS, INC.
RICHLAND PLANTATION FIELD
 EAST FELICIANA PARISH, LOUISIANA

UNIT COMPARISON
 TUSCALOOSA MARINE SHALE

0 3000' 6000'



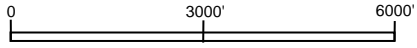
HPB Lease
 96.983 Acs.

TMS RA SUB
RICHLAND FARMS 74H No. 1
 ±1230 ACRES

PROPOSED
COMPROMISE

EXHIBIT NO. 7
 DOCKET NO. 18-587
 DATE: 11-15-18

RICHLAND FARMS, INC.
 RICHLAND PLANTATION FIELD
 EAST FELICIANA PARISH, LOUISIANA
 COMPOSITE SOLUTION
 TUSCALOOSA MARINE SHALE



EOG PROPOSAL
 1150.95 Ac.

HPB Lease
 96.983 Ac.

TMS RA SUB
RICHLAND FARMS 74H No. 1
 ±1230 ACRES

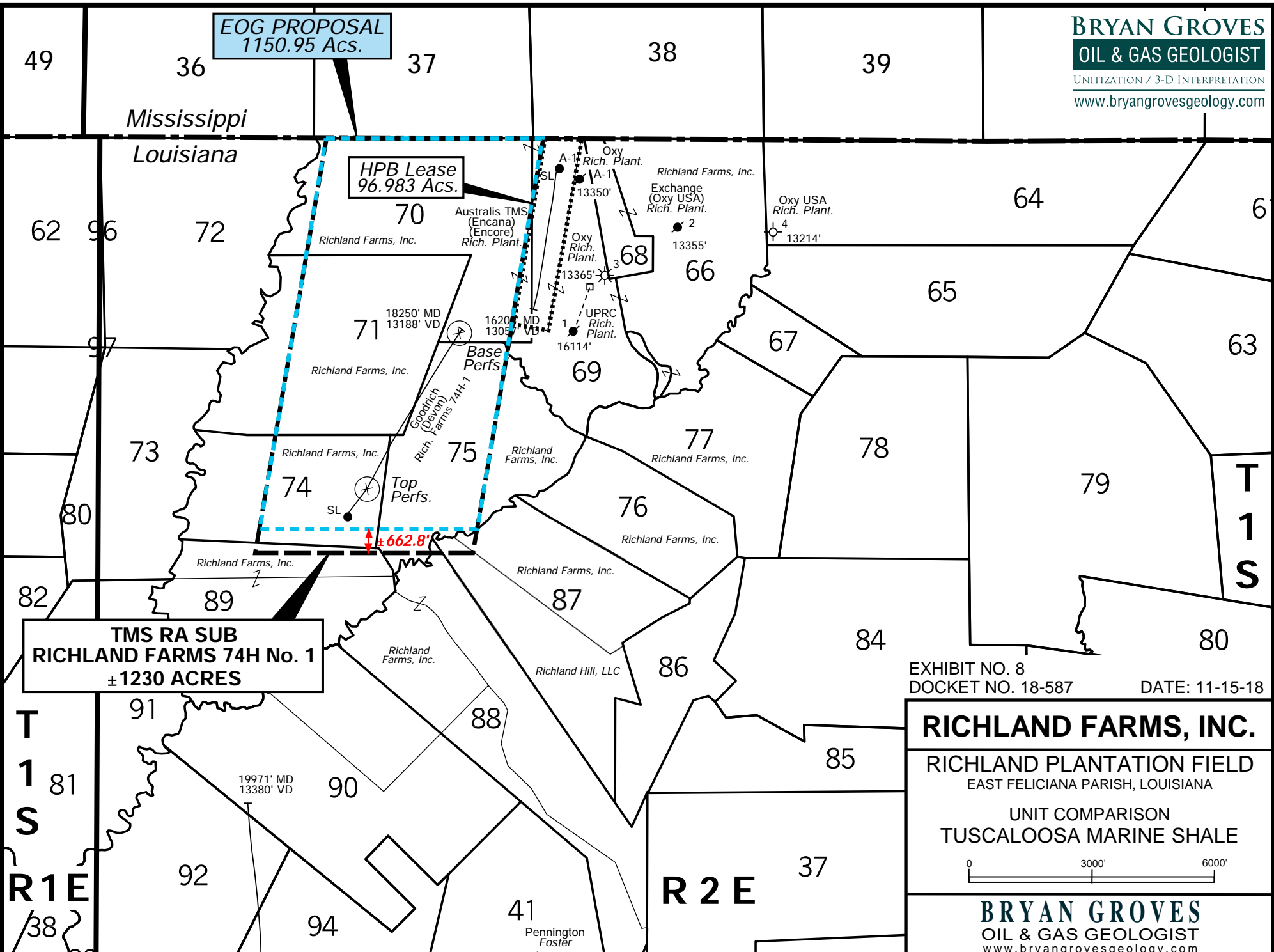


EXHIBIT NO. 8
 DOCKET NO. 18-587
 DATE: 11-15-18

RICHLAND FARMS, INC.
 RICHLAND PLANTATION FIELD
 EAST FELICIANA PARISH, LOUISIANA
 UNIT COMPARISON
 TUSCALOOSA MARINE SHALE

0 3000' 6000'

EOG PROPOSAL
1150.95 Ac.

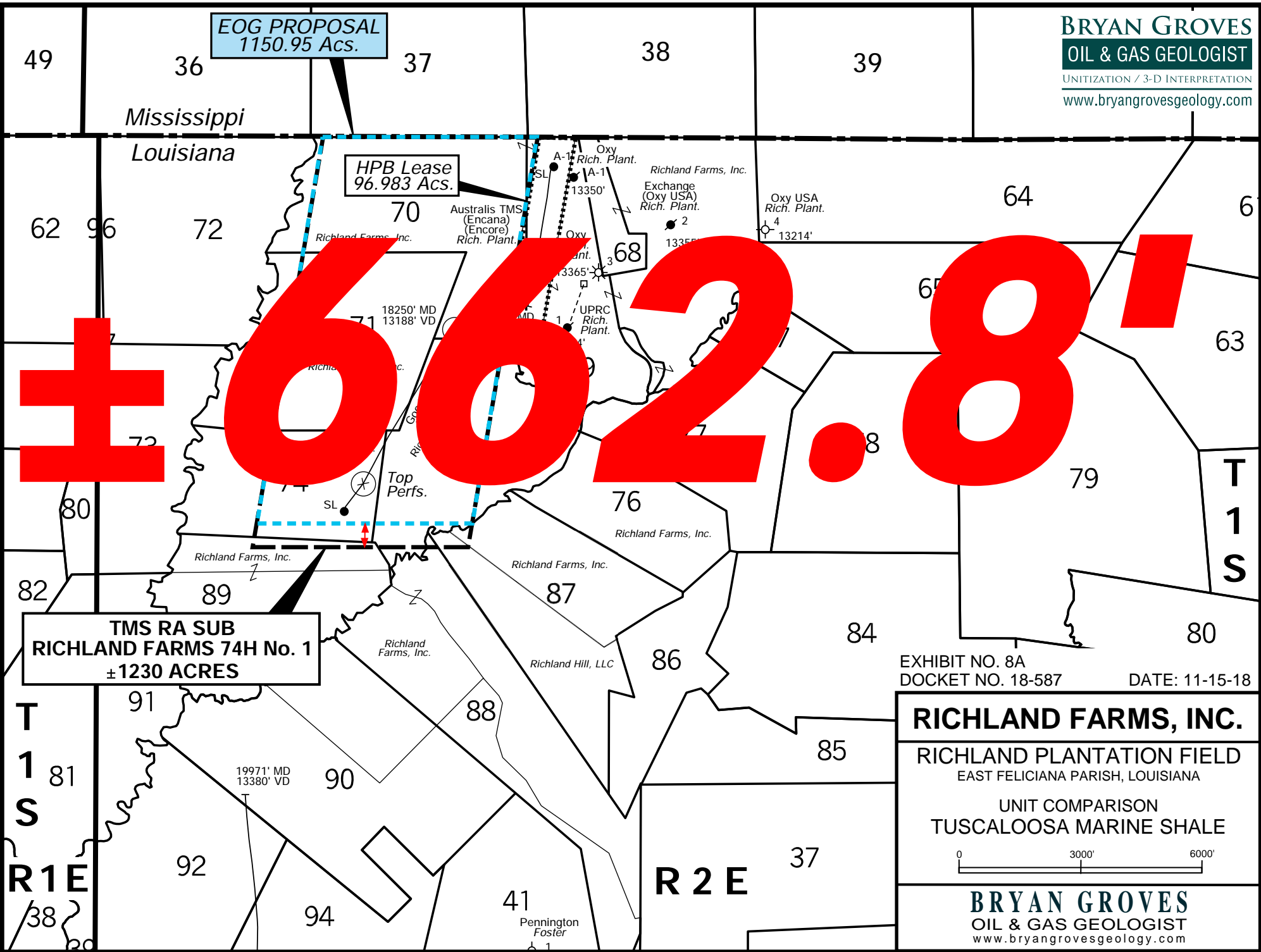
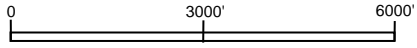
HPB Lease
96.983 Ac.

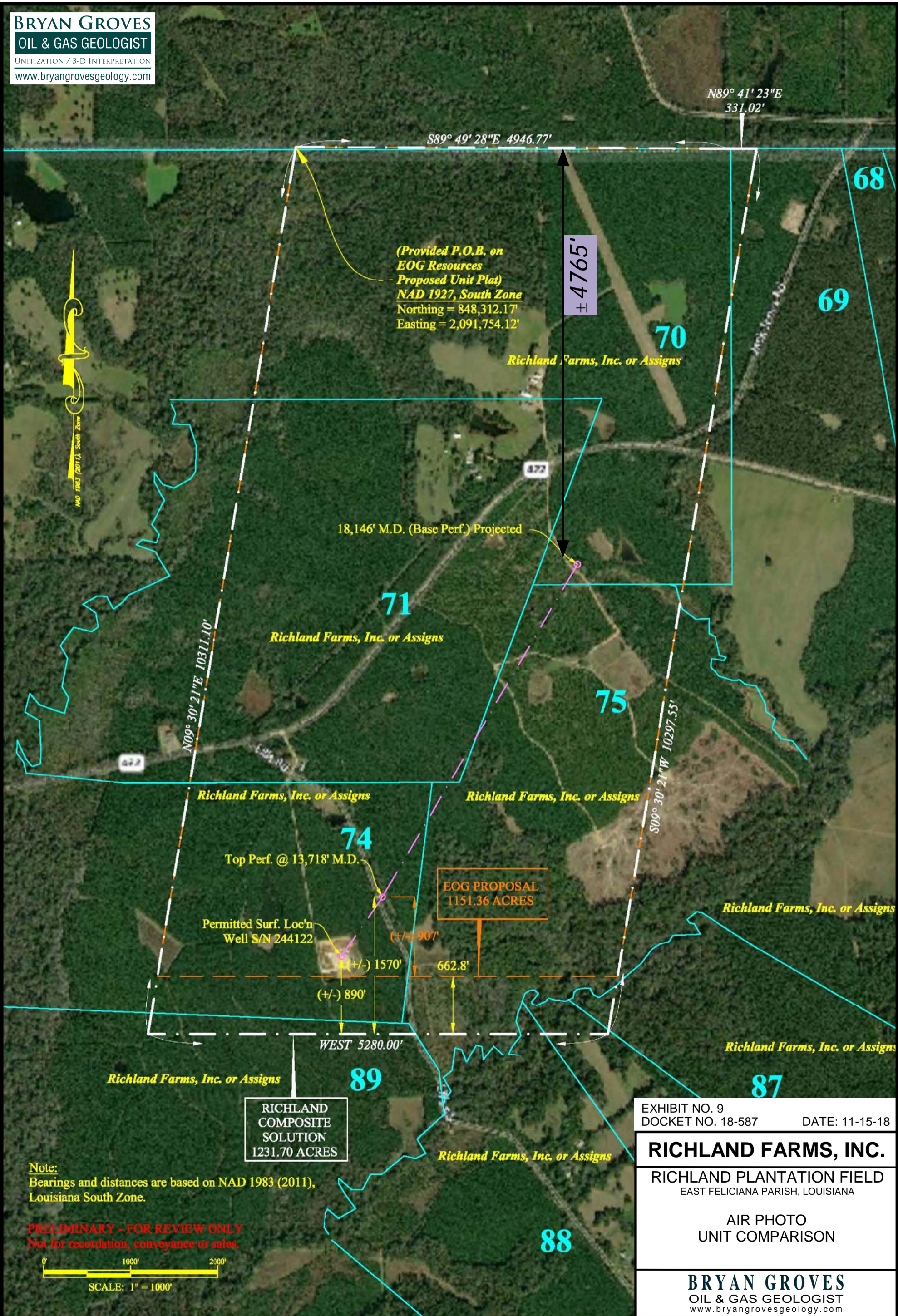
TMS RA SUB
RICHLAND FARMS 74H No. 1
± 1230 ACRES

± 6628'

EXHIBIT NO. 8A
DOCKET NO. 18-587
DATE: 11-15-18

RICHLAND FARMS, INC.
RICHLAND PLANTATION FIELD
EAST FELICIANA PARISH, LOUISIANA
UNIT COMPARISON
TUSCALOOSA MARINE SHALE





(Provided P.O.B. on
 EOG Resources
 Proposed Unit Plat)
 NAD 1927, South Zone
 Northing = 848,312.17'
 Easting = 2,091,754.12'

± 4765'

18,146' M.D. (Base Perf.) Projected

Top Perf. @ 13,718' M.D.

EOG PROPOSAL
 1151.36 ACRES

Permitted Surf. Loc'n
 Well S/N 244122

RICHLAND
 COMPOSITE
 SOLUTION
 1231.70 ACRES

Note:
 Bearings and distances are based on NAD 1983 (2011),
 Louisiana South Zone.

PRELIMINARY - FOR REVIEW ONLY
 Not for recordation, conveyance or sales.

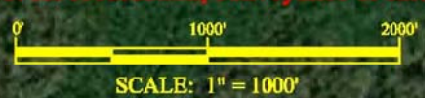


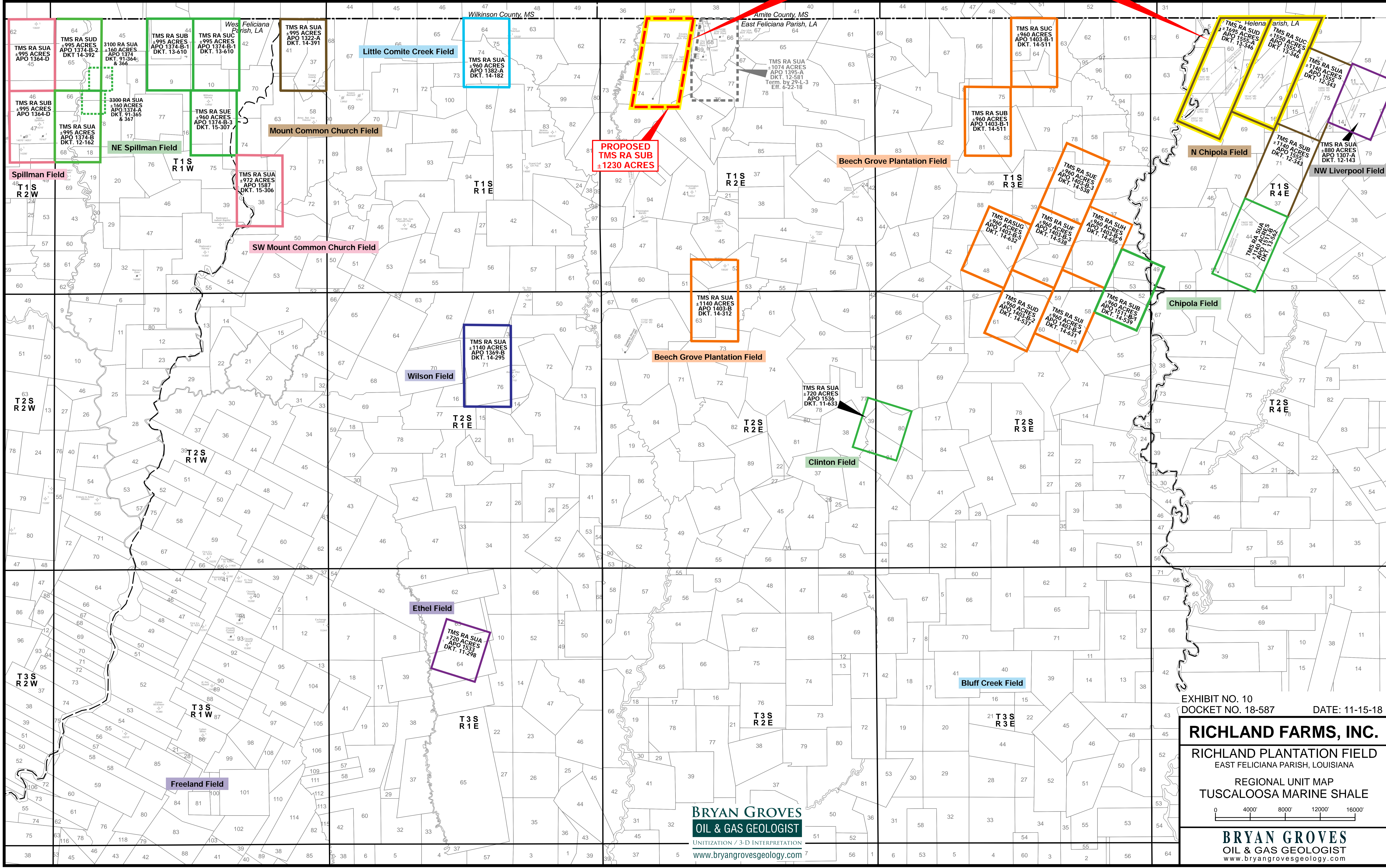
EXHIBIT NO. 9
 DOCKET NO. 18-587 DATE: 11-15-18

RICHLAND FARMS, INC.

RICHLAND PLANTATION FIELD
 EAST FELICIANA PARISH, LOUISIANA

AIR PHOTO
 UNIT COMPARISON

**Lease Basis Production
Followed By LDNR Units**



**PROPOSED
TMS RA SUB
±1230 ACRES**

Little Comite Creek Field

Mount Common Church Field

NE Spillman Field

Spillman Field

SW Mount Common Church Field

Wilson Field

Beech Grove Plantation Field

Clinton Field

Ethel Field

Bluff Creek Field

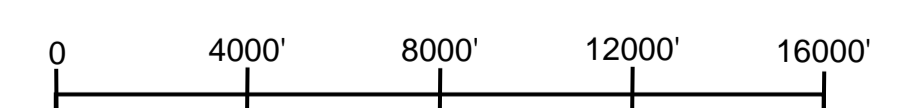
N Chipola Field

Chipola Field

Freeland Field

EXHIBIT NO. 10
DOCKET NO. 18-587 DATE: 11-15-18

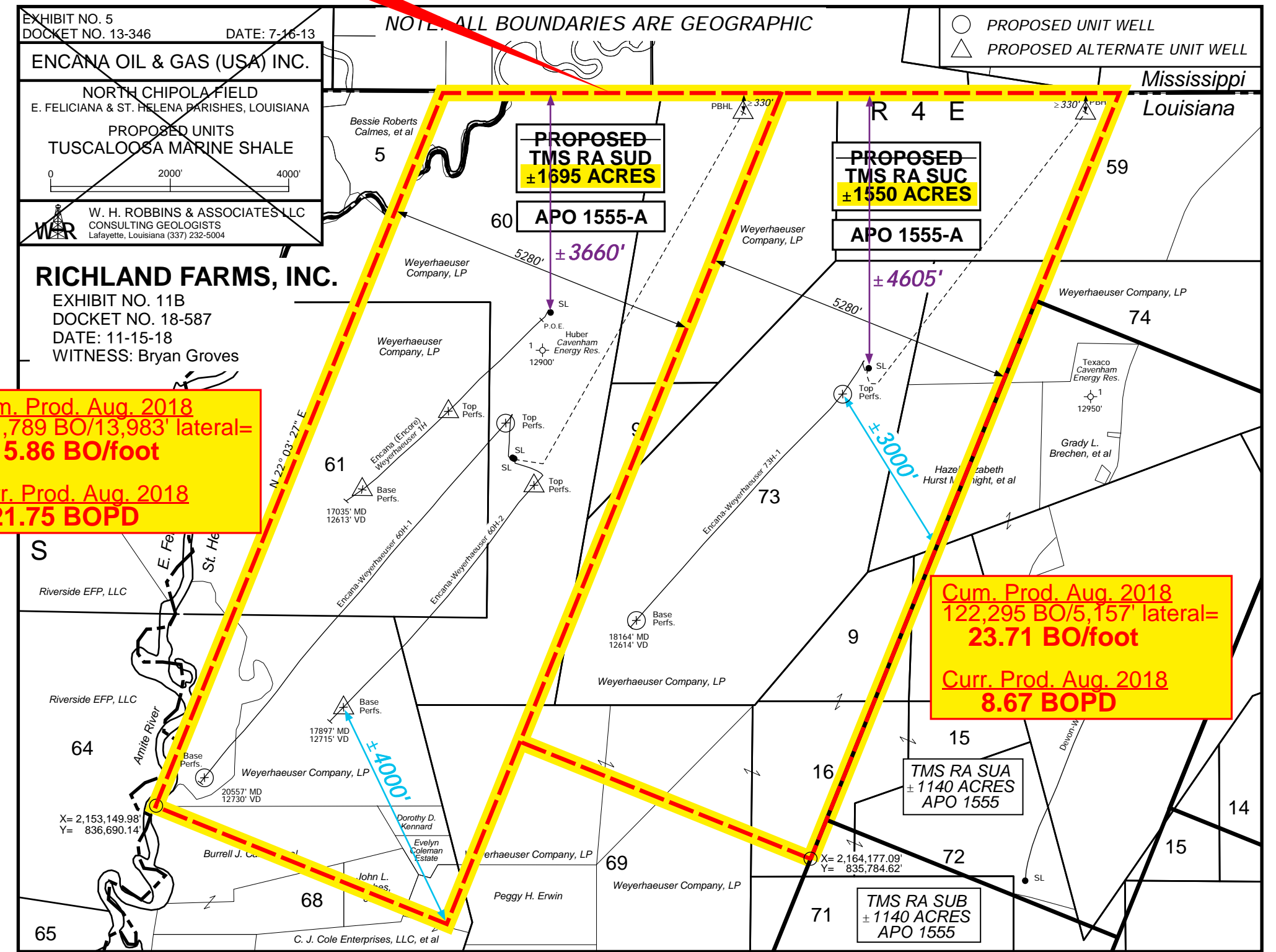
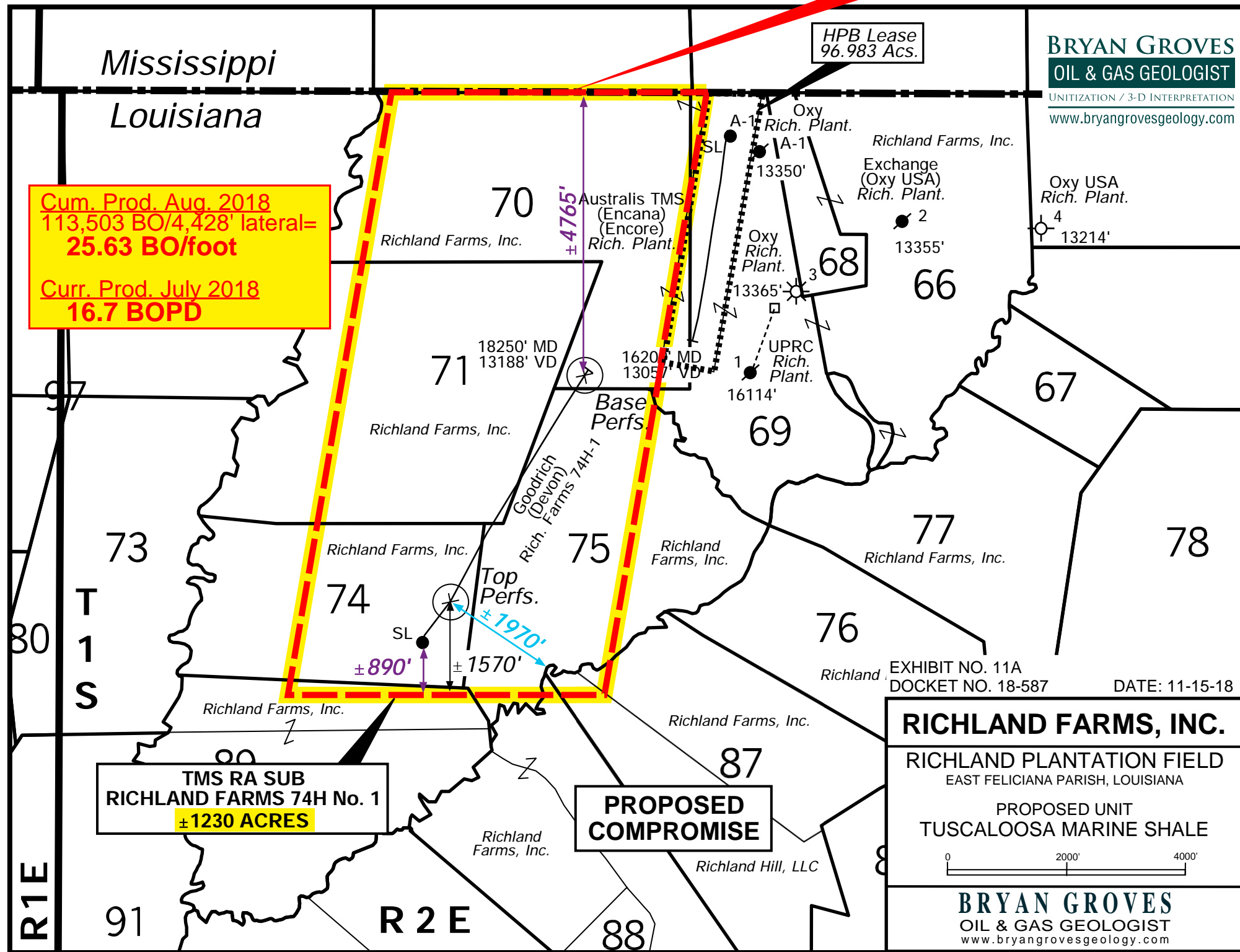
RICHLAND FARMS, INC.
RICHLAND PLANTATION FIELD
EAST FELICIANA PARISH, LOUISIANA
REGIONAL UNIT MAP
TUSCALOOSA MARINE SHALE



BRYAN GROVES
OIL & GAS GEOLOGIST
www.bryangrovesgeology.com

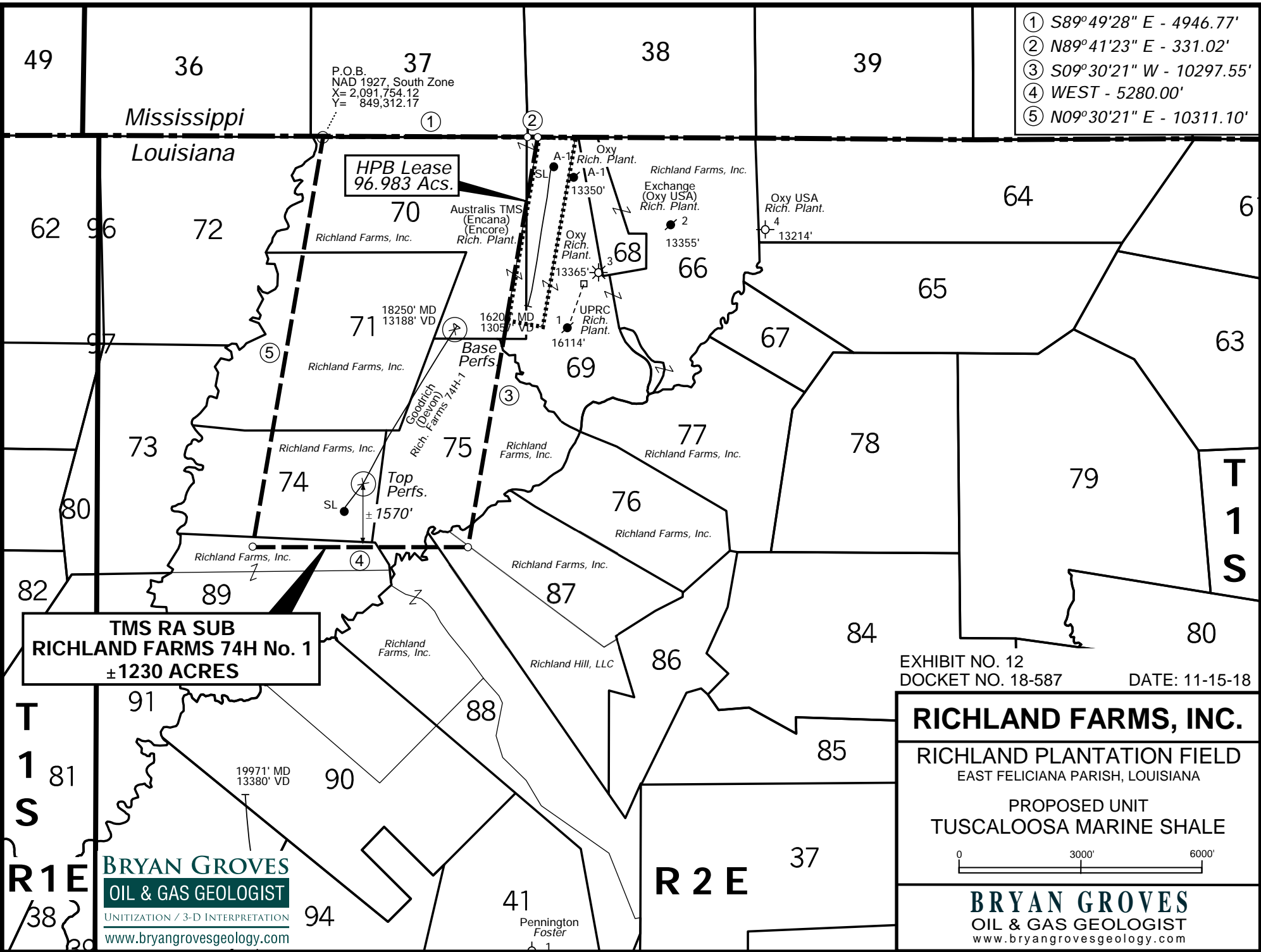
BRYAN GROVES
OIL & GAS GEOLOGIST
UNITIZATION / 3-D INTERPRETATION
www.bryangrovesgeology.com

Lease Basis Production Followed By LDNR Units



P.O.B.
NAD 1927, South Zone
X= 2,091,754.12
Y= 849,312.17

- ① S89°49'28" E - 4946.77'
- ② N89°41'23" E - 331.02'
- ③ S09°30'21" W - 10297.55'
- ④ WEST - 5280.00'
- ⑤ N09°30'21" E - 10311.10'

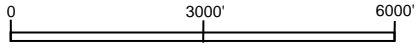


HPB Lease
96.983 Acs.

TMS RA SUB
RICHLAND FARMS 74H No. 1
±1230 ACRES

EXHIBIT NO. 12
DOCKET NO. 18-587
DATE: 11-15-18

RICHLAND FARMS, INC.
RICHLAND PLANTATION FIELD
EAST FELICIANA PARISH, LOUISIANA
PROPOSED UNIT
TUSCALOOSA MARINE SHALE



BRYAN GROVES
OIL & GAS GEOLOGIST
UNITIZATION / 3-D INTERPRETATION
www.bryangrovesgeology.com

BRYAN GROVES
OIL & GAS GEOLOGIST
www.bryangrovesgeology.com